

**ARAX
MAX!**
VAPING PEN

MAXIMUM VAPING MANUAL

We designed ARAMAX vaping pen, along with the ARAMAX vape juices, for our customers looking to enhance their vaping experience – making it the most pleasurable part of their daily routine. We take our mission to deliver MAXIMUM VAPING PLEASURE!

EASY TO USE

Simple one-touch operation

ON THE GO

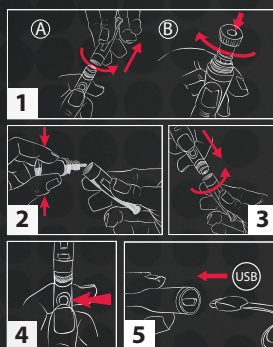
Rechargeable 900mAh battery

NO DOWN TIME

Charge and vape at the same time with micro-USB cable and pass-through technology

CLEAROMIZER

QUICK START



1. (A) Unscrew tank from battery and *(B) screw in atomizer. **2.** Fill tank with ARAMAX vape juices by squeezing liquid AROUND venting hole. **3.** Screw tank back into battery. **4.** Turn on device by pressing battery button **5x** rapidly. **5.** Charge the device with the USB cable provided.

To clean the tank, rinse under water without atomizer. You should replace your atomizer after approximately 2 weeks of use. For detailed instructions and warranty information, visit WWW.ARAMAXVAPE.COM

THIS PRODUCT CONTAINS

- 1** ARAMAX dual-coil Vaping Pen (battery, atomizer, tank)
- 1** Micro-USB cable

TECHNICAL SPECIFICATIONS

Voltage: PWM 3.7V max, non-adjustable

Atomizer: 1.8ohm dual-coil

Battery: 900 mAh Li-Ion rechargeable

E-liquid tank capacity: 2.0 ml

Full tank/charged battery: 300 puffs

Best performance: From -20°C to 40°C

OPERATIONAL BUTTON

BREATHING LIGHT

When Pressed (Vaping Mode)

NO BLINKING

Battery Full

SLOW BLINK

Battery Half Full

FAST BLINK

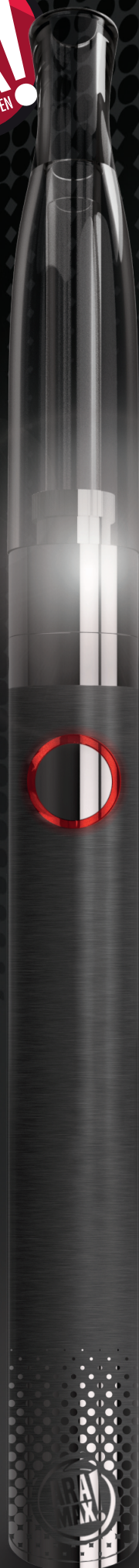
Battery Empty

ALTERNATING FAST/SLOW BLINKING

Error, contact support for more info!



Made by Shenzhen Rtech Technology Development Co., Ltd. 1F B9, Dongfang Jianfu Yusheng Ind. Park, 107 Rd. Gushu, Baoan, Shenzhen, Guangdong, China, 518126 tel: +86 (755) 619-04-000



WARRANTY

RTECH warrants ARAMAX Vaping Pen against defects in materials and workmanship under normal use for a **limited period of 1 year from the date of original retail purchase** by the end-user purchaser.

- Original purchasing receipt is required in order to claim warranty case. Atomizers and spare parts are not covered by this warranty.
- To obtain warranty service, ask support from certified seller or contact us at support@aramaxvape.com with the problem.

WARNING AND PRECAUTION

Before using ARAMAX Vaping Pen, read all the instructions carefully. Failure to follow safety instruction could result in injury or damage. Warning and precaution included here cannot cover all possible conditions and situations that could occur. Caution and care must be exercised when using or maintaining.

- Do not attempt to repair, disassemble, or modify the device by yourself. Ask support from technical service provider from seller accredited by RTECH or contact us at support@aramaxvape.com.
- Do not attempt to combine the device with parts from other brands.
- Do not drop, crush, bend, deform, puncture, shred, microwave, incinerate, paint, or insert foreign objects into the device.

This product is equipped with a Lithium-Ion battery. Do not pierce, open, disassemble, or use it in a humid and/or corrosive environment. Do not put, store, or leave your product in or near sources of heat, in direct strong sunlight, in a high temperature location, in a pressurized container or in a microwave oven. Do not expose it to temperatures over 40° (104 F) or voltages above 5.5V. If battery fluid leak, avoid contact with skin and eyes. If contact occurs, flush thoroughly with water and seek medical attention immediately. Failure to follow these instructions could cause battery to leak acid, become hot, explode, or ignite and cause injury or damage.

Do not use faulty cable for charging. Charge the device indoor only. Do not use malfunctioning charger or high voltage one (must not be higher than 5.5V). Do not leave charging device unattended. If the device is not used for an extended period, the voltage will go down naturally due to self-discharge. Make sure to charge the battery before use.

Keep away and do not soak in the water or any other liquid, strong chemicals.

ATTENTION

Keep the device out of reach of children. Do not use if you are under the legal regulation.

EXCLUSION AND LIMITATION

The limited warranty does not apply to:

- (a) damage to device caused by operating outside the permitted or any violation described in warning and precaution;
- (b) damage to any of device components caused by normal wear and tear;
- (c) cosmetic damage, including but not limited to scratches, dents, and broken plastic;
- (d) damage due to the high voltage shock.
- (e) damage caused by accident, abuse, misuse, flood, fire, earthquake, or other external causes.

SUPPORT

For further question or support, please visit www.aramaxvape.com or contact us at support@aramaxvape.com



Made by Shenzhen Rtech Technology Development Co., Ltd. 1F B9, Dongfang Jianfu Yusheng Ind. Park, 107 Rd. Gushu, Baoan, Shenzhen, Guangdong, China, 518126 tel: +86 (755) 619-04-000